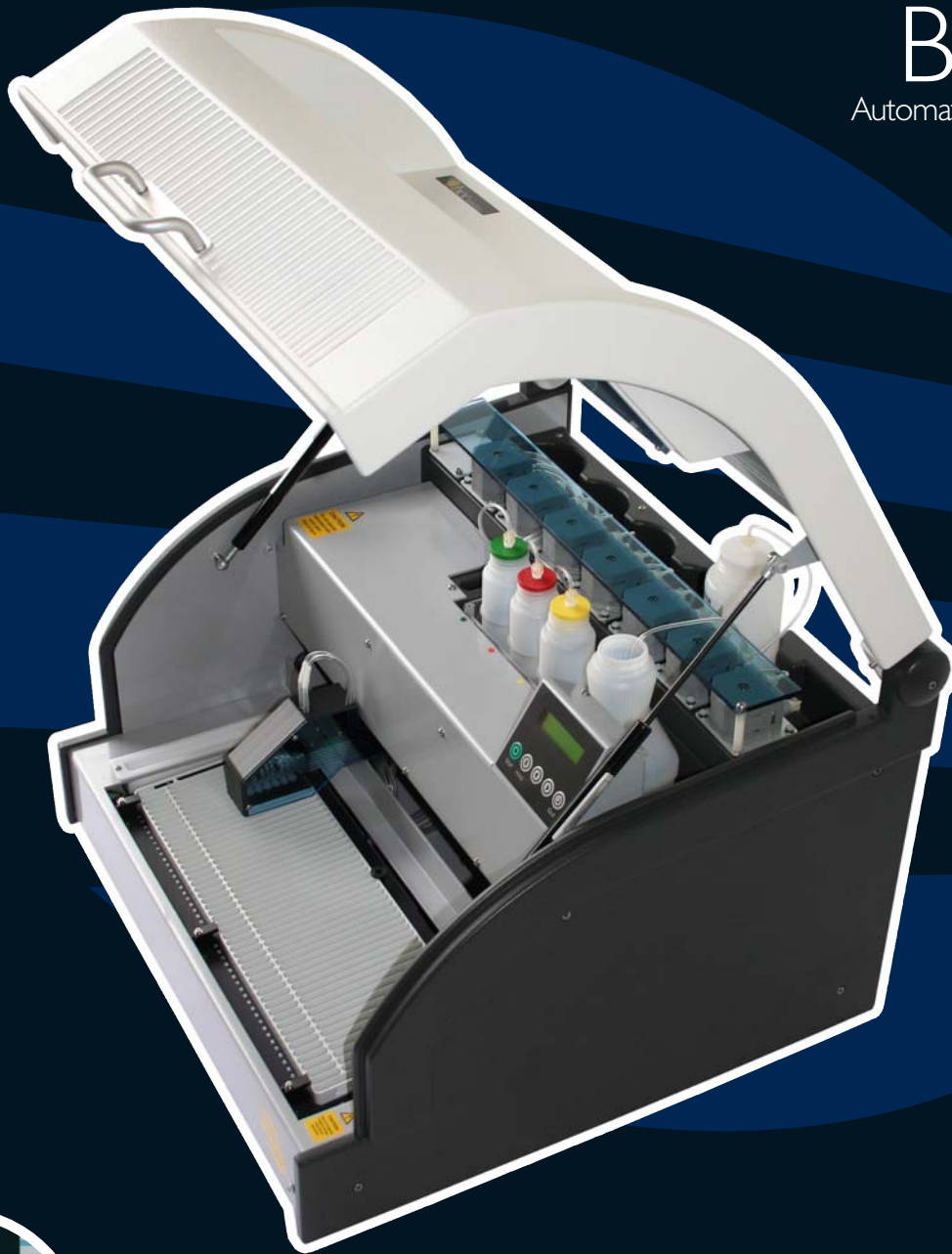


BeeBlot

Automation for Western Blots



Product Highlights

- Easy walk away system
- Reagent save feature
- Fully programmable
- Reusable trays



Automation for Western Blot strip-based assays

BeeBlot
Automation for Western Blots

- Easy walk away system
- Reagent save feature
- Fully programmable
- Reusable trays

The BeeBlot designed and manufactured by Bee Robotics Ltd. offers full automation for Western Blot strip based assays. The user-friendly software allows the operator to design custom assays, which can be uploaded to the instrument to run from an integral keypad. Up to 50 samples can be run per assay.

Precision stepper motors are used to move a dispensing arm above the tray wells, and up to 6 reagents with an option for another 3 can be delivered under software control. A reagent save feature sucks back the reagent into the bottles after that particular reagent has been used for the last time during the assay.

Colour coding is used to easily identify reagent positions and associated pump. Luer connectors are used throughout for ease of maintenance.



SPECIFICATION

Display Unit:	LCD with 2 rows of 16 digits
Keypad:	5 membrane covered switches
Number of Dispensing Heads:	6 standard (option for another 3)
Optional Reagent Save Feature:	Reversible pumps
Peristaltic Pumps:	Option for up to 9 pumps
Power ON Indicator:	Green LED
Computer Interface:	Programmable via RS232
Capacity:	Minimum 2, Maximum 48/50 samples per run
Instrument Control:	Integral keypad
Reagent Volume Range:	250ul – 4ml
Dispensing Accuracy:	Less than or equal to 10%

Environmental

Operation:	15 to 30°C
Operating Temperature Range:	18 to 24°C
Storage:	-10 to 70°C
Relative Humidity:	Maximum = 80% for temperature up to 31°C decreasing linearly to 50% relative humidity at 40°C
Altitude:	Up to 2000m
Over Voltage Category:	II
Method of Disposal:	Hazardous waste
Usage:	Commercial
Pollution Degree:	2

Power

Supply:	Universal input Mains supply voltage fluctuations not to exceed +/- 10% of normal voltage
Fuses:	T rating 5 amps @ 110-240volts
Non Operator Internal Fuses:	Power supply unit – AC 100-250V 3.2A 50/60Hz
Consumption:	5 amps @ 110-240volts

Physical

Dimensions:	640mm(w) x 620mm (d) x 450mm(h)
Weight:	45kg

Bee Robotics Ltd
Unit 32/33 Cibyn Industrial Estate
Caernarfon, Gwynedd
LL55 2BD
Tel: +44(0)1286 672 744
Fax: +44(0)1286 678 322
www.beerobotics.com

